

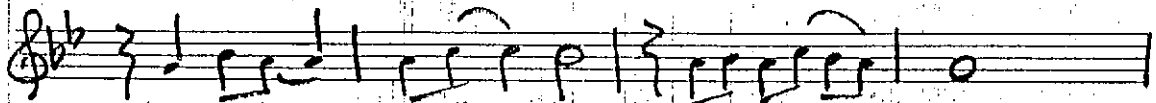
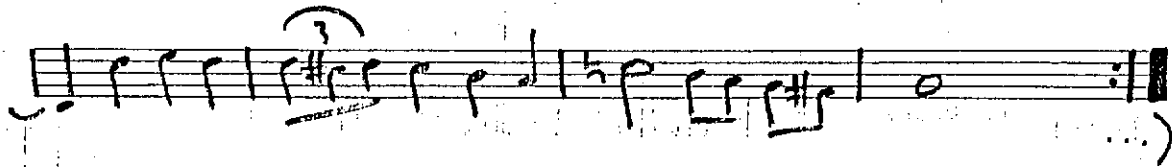
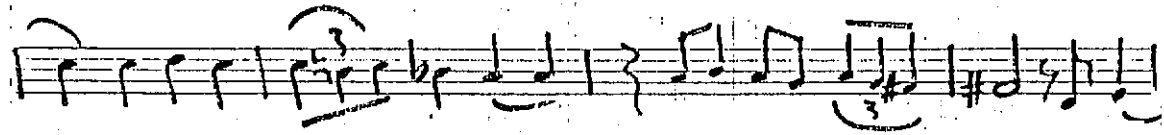
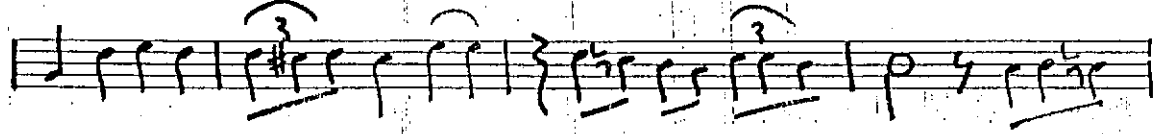
NIHAVEND SARKI

(Unut deme bana gücüm yetmiyor.)

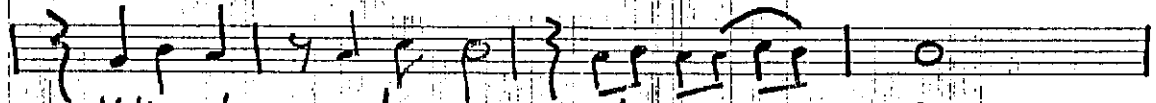
Söz: Errol GÜNGÖR
Müzik: Gökseki BAKTAGİR
1993. Göztepe.



(Aranañme si...)



Has re tin yü zün den gü le mi yo — rum



Kal bin den aş kı nı si li mi yo — rum



Sen siz ya şa ma yı bi le mi yo — rum



U nut deme ba na gü cüm yet mi yor



U nut deme ba na gü cüm yet mi

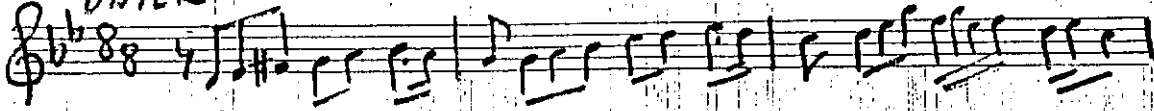
DÜZEK

(Tempo ---
400 ---)

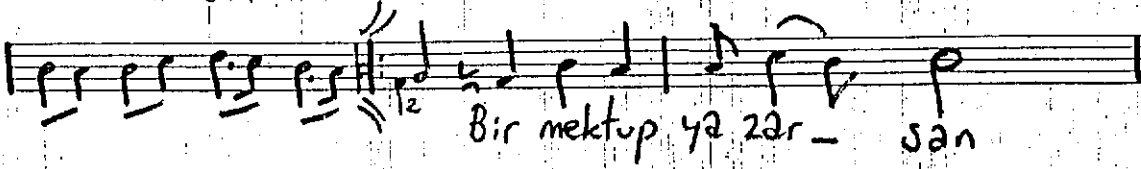
Nihal End

Göksel Baktayır

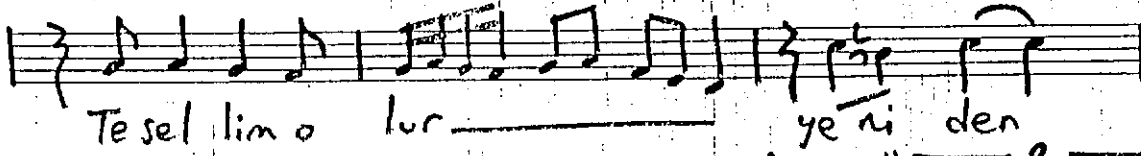
DÜYEK



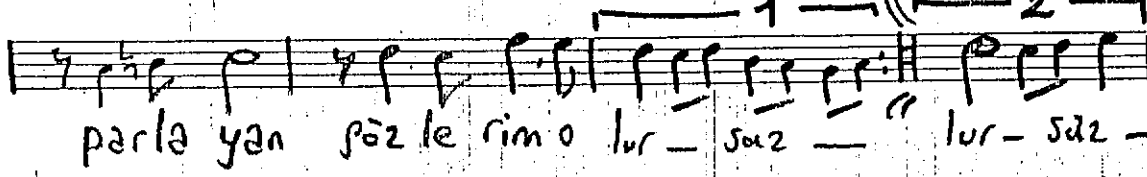
L SAZ...



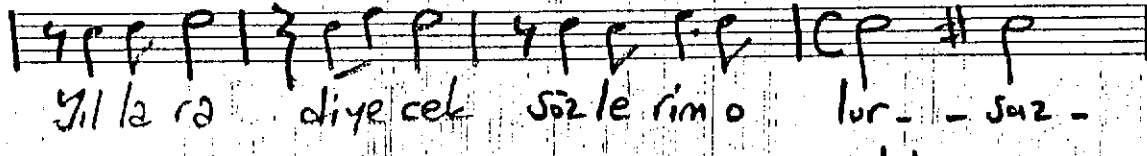
Bir mektup ya zar - san



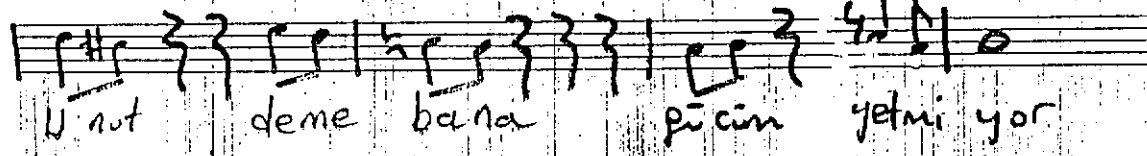
Te sel lim o lur - ye ni den



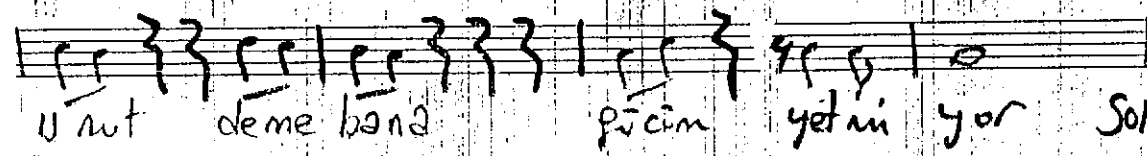
par la yan söz le rim o lur - sa z - lur - sa z -



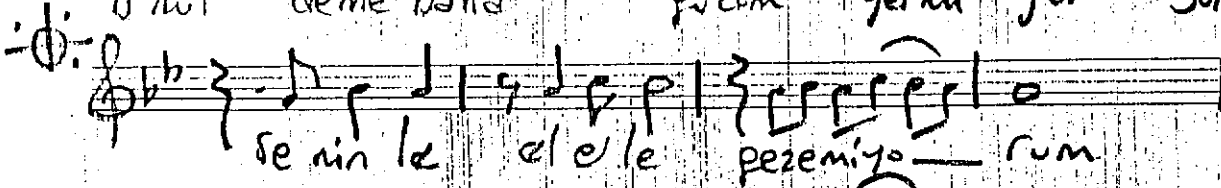
Yıl la ra di ye cek söz le rim o lur - sa z -



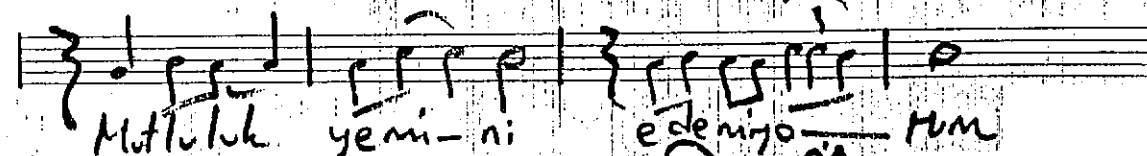
U nut deme bana pü cüm yet mi yor



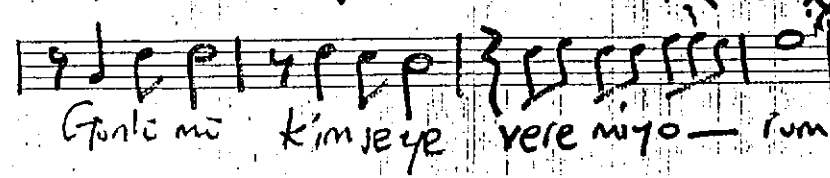
U nut deme bana pü cüm yet mi yor SON.



Se nin le el e le pe ze ni yo - rum



Mut lu luk ye ni - ni e de ni yo - rum



Gül ü mü kim ye ye ve re ni yo - rum

Handwritten signature